



CATALOG

MAY 2023



TABLE OF CONTENTS

100% WIRELESS	3
ASTERA SYSTEM	4
TITAN LED ENGINE	8
RUNTIME EXTENDER	9
LEO FRESNEL & PLUTO FRESNEL	10
HYDRAPANEL	12
TUBES	14
PIXELBRICK	18
AX9 & AX5	20
AX3	26
AX2	28
NYX BULB	30
POWER & CONNECTIVITY	32
ASTERA WORLDWIDE	34



WHAT MAKES OUR LIGHTS THE NUMBER ONE CHOICE?



Talkback+

Detect all available lights, set them up, check their status, configure DMX addresses and DMX profiles.



Seamless Runtime

Set the length of your event and be sure that your lights won't run out while still getting the maximum brightness.



TruColor Calibration

Individually calibrated lights lead to 100 % color consistency and exact color reproduction of color temperatures and standard filter gels.



Effects

Quickly create programs out of colors and effects. Turn multiple programs and lights into scenes.



Flicker Free

Scrambled PWM technology to avoid flickering when filming.



Green/Magenta correction

Adjust green/magenta during content creation to reduce post-production work.



Scheduled Stand-by

Switch lights into power-saving standby and schedule them to wake up when the event starts.



Dynamic Power-boost

This exclusive feature makes the light able to display the maximum brightness at all time and intensify non-white colors.



Emergency Light

Switches to white light when AC power is cut to keep your event save.



Anti-theft

The lights give visual and audible alarm and send a notification to the AsteraApp if they are being moved during an event.



DJ Feature

Auto BPM analyzes the beat and matches programs to it, flash buttons can trigger special effects while being held down.



Other features

The AsteraApp is packed with many additional items and new features are frequently added via software updates.

100% WIRELESS



Max. 20h

Advanced battery technology and control let you set the battery runtime to up to 20 hours. You can be sure that your Astera fixture won't run out of juice before your production is finished.



Wireless DMX

Each of our lights has a CRMX module from LumenRadio built in, offering you the most reliable DMX technology on the market.



App

AsteraApp offers intuitive and fast control of complex lighting setups and is also used to change DMX settings of the lights as well as monitor them out of a distance.



IP65

All Astera fixtures come in IP65 waterproof housings to make sure you can use them outdoors without worries.

ASTERA APP

The most powerful lighting control App for film and event lighting

The AsteraApp is the result of 10 years of development and specifically designed for fast and efficient temporary light setups. It is much more than a lighting control app as it also does all the setup that would usually be done on the light itself and enables many new features that cannot be found in any other light. All in all, it is a huge time-saver when setting up, monitoring or controlling lights.



CREATIVITY AT YOUR FINGERTIPS

Create complex animated effects with thousands of pixels that stretch over multiple lights. The AsteraApp offers an intuitive user interface with preinstalled and fully customizable programs and effects.

SMART DIAGNOSING AND EDITING

Easily setup and monitor your lights from the palm of your hand, no matter how complex your production may be. Powerful tools let you quickly adjust settings of multiple lights, e.g. when preparing them for DMX usage.

COMPLEX CUSTOMIZABLE EFFECTS

Choose from a wide range of preinstalled, highly customizable effects. Have all lights react simultaneously without delay or stretch effects over multiple lights. Your lights will remember and repeat these effects without requiring a constant wireless link.

..and more functions:

SCENES

WAREHOUSING

MANUALS INCLUDED

SCHEDULED STAND-BY

BACKUP & HANDOVER

AUTO-UPDATES

WIDE APPLICATION RANGE

The AsteraApp is designed for beginners and professional operators alike. It is suitable for event and film lighting scenarios no matter if you control just one light or a complex setup with different groups of hundreds of lights.

PRECISE COLOR INPUT METHODS

AsteraApp offers several useful tools to select colors so you are covered no matter if you want to mix your own color or input an exact RGB value or x, y coordinate. Thanks to Astera's industry-leading digital calibration, the fixtures are able to reproduce the exact color selected in the app.

GROUP YOUR LIGHTS

AsteraApp can control individual lights but is also able to create a total of 256 groups each with multiple lights. To increase your possibilities even further, groups can have multiple positions/addresses.

Watch our tutorials for more information:



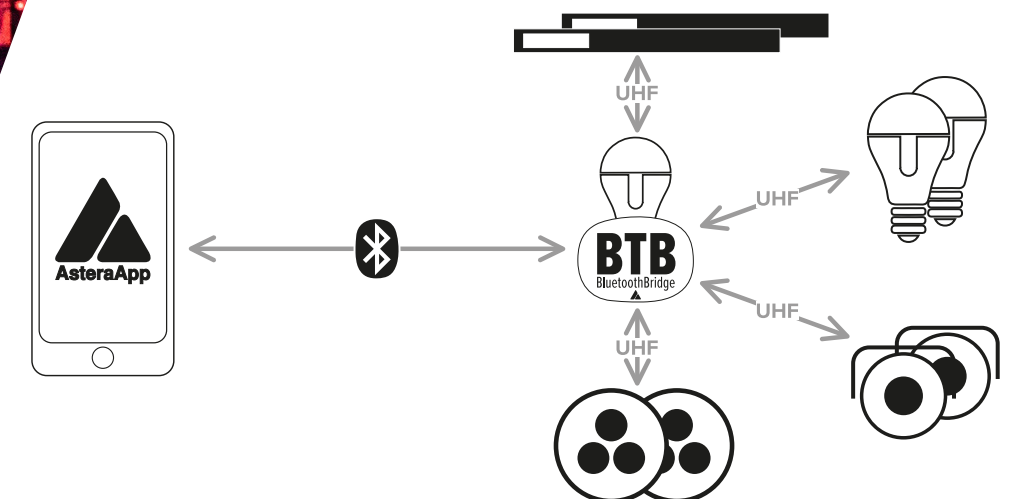
www.astera-led.com/academy

BLUETOOTH BRIDGE

Connect directly an AsteraBox or newer Astera lights via Bluetooth. The connected device will revert AsteraApp commands to other Astera lights via UHF band. The new ART7-WIFI can also connect via WIFI as an alternative to Bluetooth.

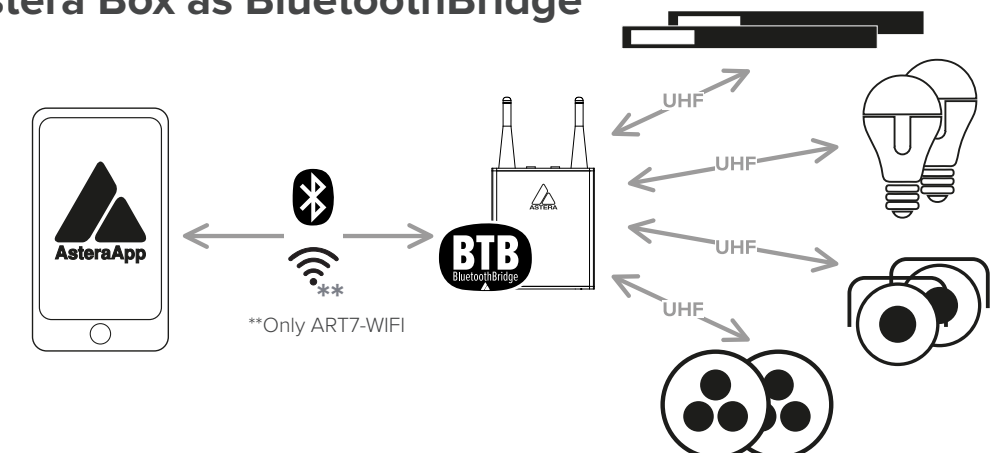


Astera Light* as BluetoothBridge



*BluetoothBridge works with Titan Tube BTB, Helios Tube BTB, Hyperion Tube BTB, AX1-BTB, AX2-BTB, AX5-BTB, AX9, PixelBrick, NYX Bulb, HydraPanel, LeoFresnel and PlutoFresnel

Astera Box as BluetoothBridge




**Only ART7-WIFI


ASTERABOX

ART7-U
ART7-WIFI


AsteraBox is the interface between lights and controller. It works as Bluetooth Bridge that can be carried on your belt thanks to its built-in battery. It can also be connected to a DMX desk to transmit wireless DMX data to all Astera lights and other lights with CRMX receiver.



included



included

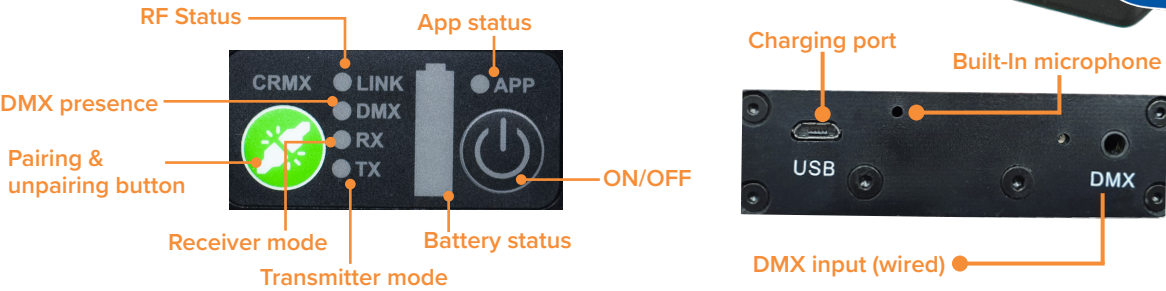


included

Carry Case
ART7-CSE

DMX Adapter
ART7-DMXA

Power Supply
ART7-CHR-U



SPECIFICATIONS

	AsteraBox	AsteraBox WIFI
Order Code	ART7-U	ART7-WIFI
DC Input	5 VDC - 2 A	5 VDC - 2 A
Battery Voltage	3.7 V	3.7 V
Battery Runtime	72 h (App), 8-10 h (CRMX)	72 h (App), 8-10 h (CRMX)
Charging Time (nominal)	8 hours	8 hours
Ports	Micro-USB for charging, 3.5 mm jack for DMX Input	Micro-USB for charging, 3.5 mm jack for DMX Input
DC Connector	Micro-USB	Micro-USB
BluetoothBridge BTB	Built-in	Built-in
Bluetooth Classic	Yes	No
Wireless Protocols	UHF, CRMX, Bluetooth 4.0	UHF, CRMX, Bluetooth*, WIFI
Wireless Range	CRMX: up to 300 m / 328 yds UHF: up to 300 m / 328 yds Bluetooth: up to 3 m / 3.3 yds	CRMX: up to 300 m / 328 yds UHF: up to 300 m / 328 yds Bluetooth: up to 3 m / 3.3 yds
Microphone	Built-in	Built-in
Housing Material	Aluminium	Aluminium
IP Rating	IP20	IP20
Ambient Operating Temperature	0 - 40 °C / 32 - 104 °F	0 - 40 °C / 32 - 104 °F
IP Rating	0.23 kg / 0.51 lb	0.23 kg / 0.51 lb
Dimensions	144 mm x 78 mm x 30 mm / 5.7" x 3.1" x 1.2"	144 mm x 78 mm x 30 mm / 5.7" x 3.1" x 1.2"
Mounting Options	Belt Clip	Belt Clip

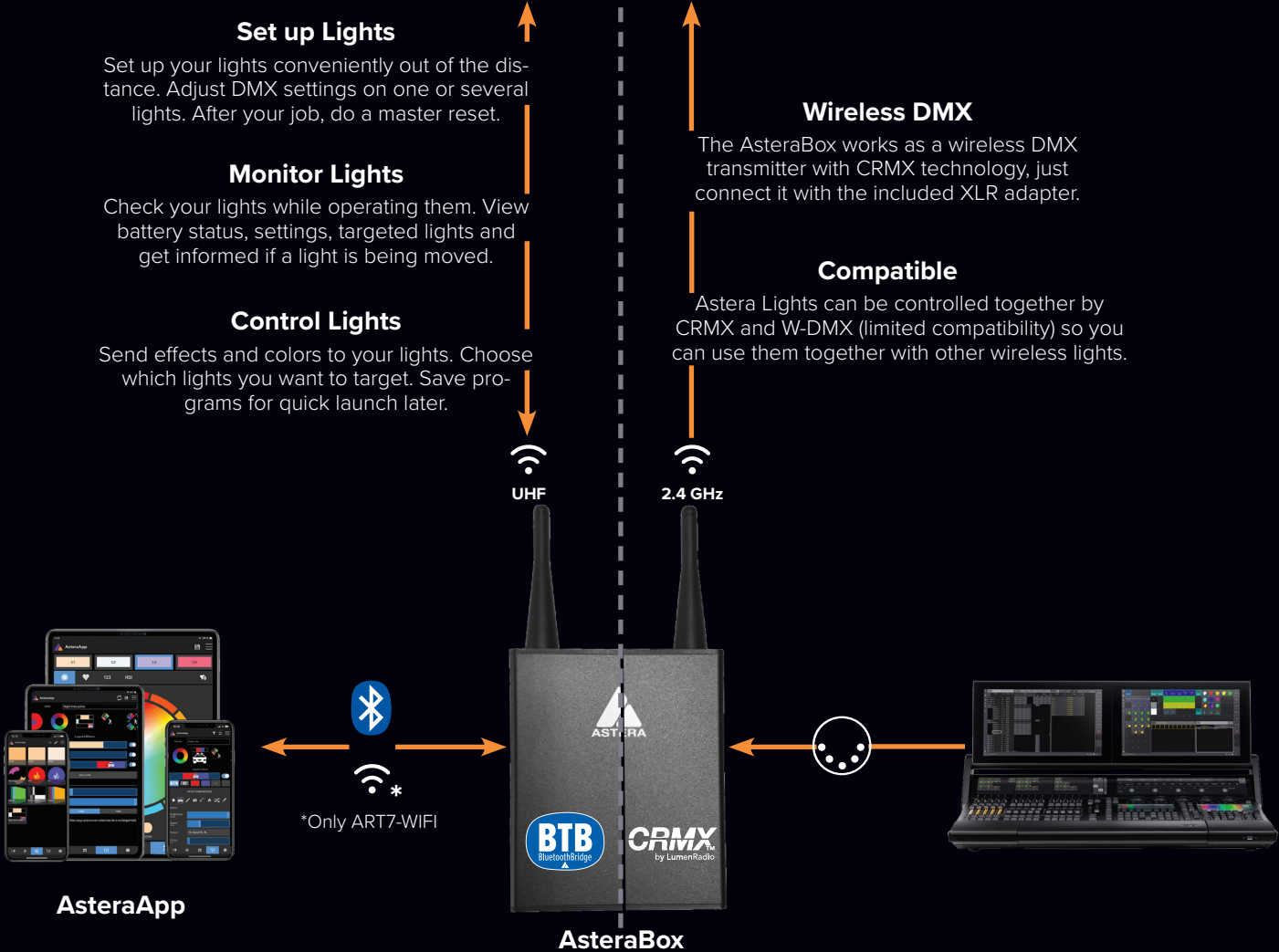
*Minimum requirement for Astera App device: Bluetooth 4.2

THE ASTERA SYSTEM



- Set up Lights**
Set up your lights conveniently out of the distance. Adjust DMX settings on one or several lights. After your job, do a master reset.
- Monitor Lights**
Check your lights while operating them. View battery status, settings, targeted lights and get informed if a light is being moved.
- Control Lights**
Send effects and colors to your lights. Choose which lights you want to target. Save programs for quick launch later.

- Wireless DMX**
The AsteraBox works as a wireless DMX transmitter with CRMX technology, just connect it with the included XLR adapter.
- Compatible**
Astera Lights can be controlled together by CRMX and W-DMX (limited compatibility) so you can use them together with other wireless lights.



TITAN LED ENGINE

The heart of the Titan LED engine is a revolutionary algorithm which generates an individual calibration for each light after measuring its photometrics during Astera’s manufacturing process.

This not only leads to accurate colors and total consistency between fixtures but also optimizes the output for high CRI and long battery runtime, no matter if displaying whites or highly saturated colors.

Temperature compensation during operation constantly measures the temperature of each LED chip and adjusts the intensity of the red, green, blue, mint and amber LEDs accordingly to maintain an even output.

With this technology the Titan LED engine can reproduce precise color temperatures, RGB values and colors defined by x, y coordinates from the AsteraApp and DMX consoles.

To ensure a high level of precision, selected Service Centers can re-calibrate the LEDs after a long runtime if needed.

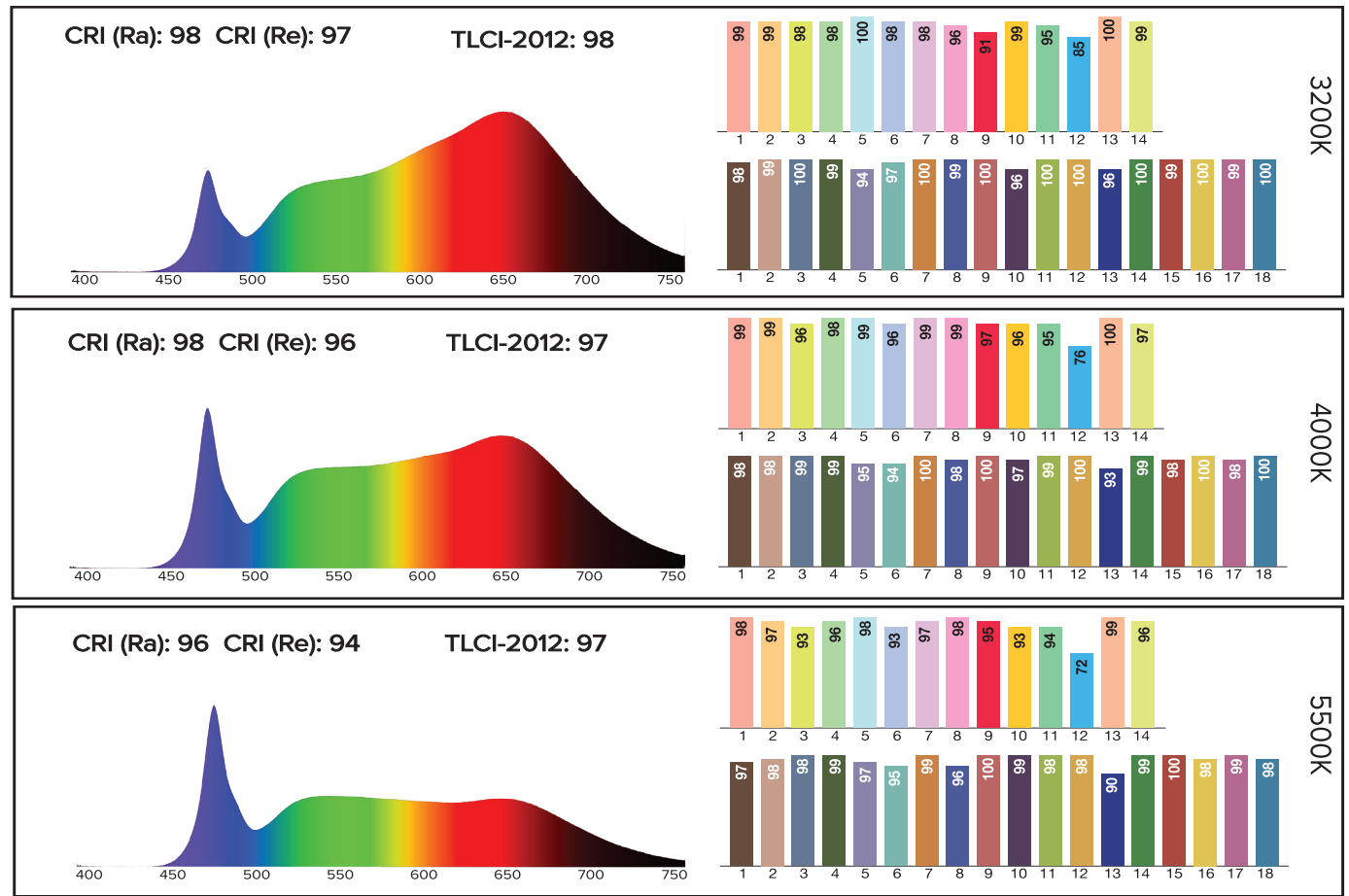
RGB+MINT+AMBER
FULL
SPECTRUM

1750K - 20000K
WIDE CCT
RANGE

TLCI/CRI Ra ≥ 96
EXCELLENT
COLOR RENDERING
from 3.200K to 6.500K

RGB, HSI, X,Y &
FILTER GELS

Spectra of lights with Titan LED Engine*



*Typical values

RUNTIME EXTENDER

REX1-VM
REX1-GM



RuntimeExtender is a battery plate to connect standard camera batteries to many Astera lights. This enables you to extend your production and work without worries when shooting films or lighting events. The RuntimeExtender supports a wide range of Astera products.

ACCESSORIES



included
HexConnect
AX-HCN
Bolt with Hexagon shape for mounting RuntimeExtender via SuperClamp



included
BrickConnect
PB15-BCN
Connect two RuntimeExtender back-to-back so that they can be mounted with only one SuperClamp



KIT FOR 4
414 x 335 x 183 mm
16.31 x 13.19 x 7.2 inches

8.46 kg / 18.65 lbs (full weight) REX1-VM-KIT-4
8.35 kg / 18.41 lbs (full weight) REX1-GM-KIT-4

Contains
4x RuntimeExtender (REX1-VM / -GM)
4x HexConnect (AX-HCN)
4x Power/Data Combination Cable (1.5 m / 5 ft) (PWB-CAB-1.5)
8x Waterproof Protection Cover (PB15-PLG)

4x BrickConnect (PB15-BCN)
4x SuperClamp (third party article)

SPECIFICATIONS

Order Code	REX1-VM (V-Mount)	REX1-GM (Gold Mount)
Battery Voltage	14.4 VDC or 26 VDC	
Battery Runtime	Dependant on third party battery used and type of fixture	
Battery Runtime max. Brightness	Dependant on third party battery used and type of fixture	
DC Output on DC Barrel Connectors	24 VDC - 100 W combined on two outputs	
DC Output on XLR	Direct passthrough from attached battery	
DC Connectors	2 x 5.5 mm x 2.1 mm / 1 x 3-Pin XLR	
AC Input	N/A	
Housing Material	Polycarbonate & Metal	
IP Rating	IP20	
Ambient Operating Temperature	0 - 40 °C / 32 - 104 °F	
Weight	617 g / 1.36 lb	580 g / 1.28 lb
Dimensions L x W x D	148 mm x 112.8 mm x 45.5 mm / 5.8" x 4.45" x 1.79"	148 mm x 112.8 mm x 48.2 mm / 5.8" x 4.45" x 1.9"
Mounting Options	2 x AirlineTrack compatible with PB15 accessories	



LEOFRESNEL

250 W RGBMA

equivalent to 1000 W Tungsten



PLUTOFRESNEL

80 W RGBMA

equivalent to 300 W Tungsten



Max. 20h



App



Wireless DMX



IP55

LEOFRESNEL AF250 PLUTOFRESNEL AF80

Astera's new Fresnels offer a 15° to 60° beam angle and superior colors, thanks to their Titan LED Engine. Both models contain a battery and feature numerous mounting options, making them the most portable Fresnel option for film, studio and event lighting.



BUILT-IN BATTERY

- PlutoFresnel: 3h on MAX Runtime
- LeoFresnel: 2h on MAX Runtime
- + External battery option



INCLUDED WITH EACH LIGHT

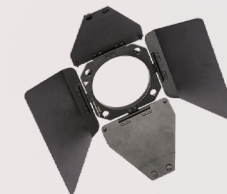


Yoke
AF250-YK
AF80-YK

YokeBase
Attaches Yoke to light
AF250-YKB
AF80-YKB



Fresnel Lens
AF250-FL
AF80-FL



Barndoor
AF250-BD
AF80-BD



TrackHandle
Carry your light around
AX-THD



Rabbit-Rounder Adapter for Leo
Connect DOP Choice modifiers
AF250-RRA

OPTIONAL ACCESSORIES



RuntimeExtender
Connect camera batteries
REX1-VM (V-Mount)
REX1-GM (Gold Mount)



Y-Cable
Connect 2 RuntimeExtenders to 1 light
REX1-YC



ProjectionLens
Coming late 2023.

LEOFRESNEL KIT AF250-KIT

Contains

- 1x LeoFresnel (AF250)
- 1x Fresnel Lens (AF250-FL)
- 1x Barndoor (AF250-BD)
- 1x Yoke (AF250-YK)
- 2x YokeBase (AF250-YKB)
- 1x TVMP Adapter (AX-TVMP)
- 1x TrackHandle (AX-THD)
- 1x Rabbit-Rounder Adapter (AF250-RRA)
- 1x Powercon True1 Cable
- 1x Case (AF250-CSE)

PLUTOFRESNEL KIT AF80-KIT

Contains

- 2x PlutoFresnel (AF80)
- 2x Fresnel Lens (AF80-FL)
- 2x Barndoor (AF80-BD)
- 2x Yoke (AF80-YK)
- 4x YokeBase (AF80-YKB)
- 2x TVMP Adapter (AX-TVMP)
- 2x TrackHandle (AX-THD)
- 2x Hyperion Tube Power Supply (FP3-CHR)
- 1x Case (AF80-CSE)

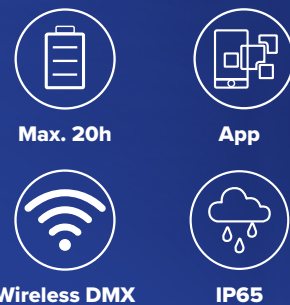


KITS

SPECIFICATIONS

	LeoFresnel	PlutoFresnel
LED Engine (colors)	Titan LED Engine (RGBMintAmber)	
Total LED Power	350 W	105 W
LED Power Draw	250 W	80 W
Equivalent to	1000 W Tungsten	300 W Tungsten
Beam Angle	15° - 60°	
Battery Runtime (max. Brightness)	up to 20 hours (2 h on MAX Brightness)	up to 20 hours (3 h on MAX Brightness)
Battery Lifetime	80 % after 400 cycles	
DC Input	12 - 48 VDC; max. 15A	24 VDC, 80 W
AC Input	100 - 240 VAC, 50/60 Hertz, 3.8 A, 250 W	No
Wired DMX	Yes (Powercon in + out sockets)	With Powerbox or Datalink
Wireless Protocols	CRMX, UHF, Bluetooth, WiFi, RDM	
IP Rating	IP55	
Dimensions L x W x D	212 mm x 183 mm x 456 mm / 8.3" x 7.2" x 17.9"	281.9 mm x 153.5 mm x 161.8 mm / 11.1" x 6.0" x 6.4"

HYDRAPANEL^{FP6}



Max. 20h

App

Wireless DMX

IP65

Beam shaping with six included light modifiers and a large range of mounting options make HydraPanel more flexible than any other product in its class. The full-spectrum Titan LED Engine generates an impressive 1300 Lumen output while running on battery power for 1:45h. All packed into a solid watertight housing of just 600g (1.3lb) weight and 166mm (6.5") length.

17W RGBMA



WIRELESS AND WIRED DMX

Built-in CRMX module and wired DMX via Astera PowerBox



COLD SHOE

Add third-party accessories and mount on cameras



COMBINE UP TO 4 PANELS

Individual control over six segments per panel



NEW CONTROL PANEL

Touch Slider for faster setting of colors, CCT, brightness



ACCESSORIES

LIGHT MODIFIERS included



HydraPanel
FP6

DiffusorSheet 100
FP6-DS-100

GelHolder
FP6-GH

SoftFrame 100
FP6-SF-100

Intensifier 80
FP6-INT-80

EggCrate 60
FP6-EGC-60

EggCrate 40
FP6-EGC-40


included

FlexBase

Flexible stand with foldable legs that attaches to HydraPanel's Cold Shoe. 4 threads to attach BabyPin etc and screw into walls and ceilings
FP6-FB


included

BabyPin

BabyPin with 1/4" thread
AX-BBP-1/4


included

ConnectorPlate

Join up to 4 panels with ConnectorPlates. Backside 1/4" thread for BabyPin
FP6-CP

SINGLE UNIT KIT

280 x 246 x 106 mm
11.02 x 9.69 x 4.17 inches
2.4 kg / 5.3 lbs (full weight)
FP6-SET-1



Contains

1x HydraPanel (FP6)	1x 6 Light Modifiers (FP6-DS-100/-GH/-SF-100/-INT-80/-EGC-60/-EGC-40)
1x FlexBase (FP6-FB)	1x Helios / Titan Tube Power Supply (FP1-CHR)
1x ConnectorPlate (FP6-CP)	1x Power/Data Cable 0,2m (PWB-CAB-0.2)
1x BabyPin (AX-BBP-1/4)	



KIT FOR 4

415 x 335 x 180 mm
16.34 x 13.19 x 7.09 inches
8.1 kg / 17.9 lbs (full weight)
FP6-SET-4

Contains

4x HydraPanel (FP6)	4x 6 Light Modifiers (FP6-DS-100/-GH/-SF-100/-INT-80/-EGC-60/-EGC-40)
4x FlexBase (FP6-FB)	1x Hyperion Tube Power Supply (FP3-CHR)
3x ConnectorPlate (FP6-CP)	3x Power/Data Cable 0,2m (PWB-CAB-0.2)
4x BabyPin (AX-BBP-1/4)	

SPECIFICATIONS

Order Code	FP6
LED Engine (colors)	Titan LED Engine (RGBMintAmber)
Total LED Power	25 W
LED Power Draw	17 W
Luminous Flux – 3200 K / 4000 K / 5500 K	1102 lm / 1287 lm / 1298 lm
Light Output @ 1m – 3200 K / 4000 K / 5500 K	443 lx / 512 lx / 516 lx
CRI (Ra) / TLCI 3200- 6500 K*	≥96
Beam Angle / Field Angle	110° x 100° / 150° x 145°
Strobe	0 - 25 Hertz
Pixel	6
Battery Runtime (max Brightness)	up to 20 hours (th 45m)
Battery Lifetime	70 % after 300 cycles
Charging Time (nominal)	3 hours
DC Input	24 VDC - 0.85 A

*Typical values

Wired DMX	Yes (via FP1-PWB / FP3-DTL / PWB-2-86)
CRMX Receiver	Built-in
BluetoothBridge BTB	Built-in
Wireless Protocols	CRMX, UHF, Bluetooth, WIFI
Wireless Range	CRMX/UHF up to 300 m / 330 yds Bluetooth up to 3 m / 3.3 yds
ControlSync / TouchSlider	Yes / Yes
Housing Material	Polymer & Metal
IP Rating unwired	IP65 (only with PB15-PLG)
IP Rating wired with PWB-CAB-0.25/-5/-10/-15	IP65
Weight	604 g / 1.3 lb
Dimensions L x W x D	166 mm x 85 mm x 43.5 mm / 6.53" x 3.34" x 1.71"

TUBES. FOR EVENTS. FOR FILM. FOR BOTH.



HELIOS TUBE

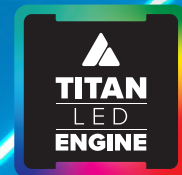
TITAN TUBE

HYPERION TUBE

Designed for Film/Broadcasting lighting and the highest performance. All 3 tubes are optimized for ultra-high CRI/TLCl and peak brightness. In addition to wireless power and control, they can be wired with power and data through a single cable.

PIXEL TUBE

An affordable yet very powerful battery LED tube for stage, event and entertainment lighting. It can be used on stages, around event sites and to create stunning lighting effects. A highly creative device that offers an infinite range of possibilities.



THE NEW TUBES - WITH BLUETOOTH BRIDGE



Our new Titan Tubes and Helios Tubes contain Bluetooth Bridge, a technology that Astera has been integrating into lights such as NYX Bulb, PixelBrick and AX9. You can connect your phone or tablet directly to the tube and use it to control additional Astera lights. An AsteraBox is not needed anymore for App control. Additional information on page 5.

IDENTIFY TUBES WITH BLUETOOTH BRIDGE

BTB-enabled Titan & Helios Tubes are marked with a BTB Logo.



SPECIFICATIONS

8
Pixel

24 W
LED Power Draw

36 W
Total LED Power

1.340 lm
Brightness in white*

550 mm

16
Pixel

48 W
LED Power Draw

72 W
Total LED Power

2.900 lm
Brightness in white*

1.035 mm

32
Pixel

92 W
LED Power Draw

144 W
Total LED Power

5.800 lm
Brightness in white*

2.031 mm

16
Pixel

16 W
LED Power Draw

28 W
Total LED Power

725 lm
Brightness in white*

1.035 mm

HELIOS TUBE

TITAN TUBE

HYPERION TUBE

PIXEL TUBE

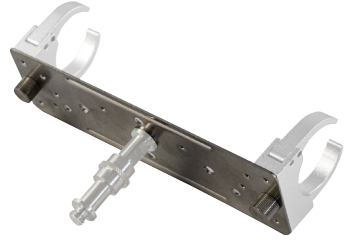
Order Code	FP2-BTB	FP1-BTB	FP3-BTB	AX1-BTB
LED Engine (colors)	Titan LED Engine (RGBMintAmber)			RGBW
Total LED Power	36 W	72 W	144 W	28 W
LED Power Draw	24 W	48 W	92 W	16 W
Luminous Flux 4000 K	1 340 Lumens	2 900 Lumens	5 800 Lumens	725 Lumens
Light Output 4000 K @ 1 m	393 Lux	785 Lux	1 570 Lux	255 Lux
CRI(Ra)/TLCI 3200-6500k*	≥96			≤88
Strobe	0 - 25 Hertz			
Pixel	8	16	32	16
Battery Runtime	up to 20 hours			
Battery Lifetime	70 % after 300 cycles			
Charging Time (nominal)	3 hours			7 hours
DC Input	24 VDC - 1.25 A	24 VDC - 2 A	24 VDC - 4 A	48 VDC - 0.5 A
Wired DMX	Yes (via FP1-PWB / FP3-DTL / PWB-2-86)		Yes (via FP3-DTL / PWB-2-86)	No
CRMX Receiver	Built in			
BluetoothBridge BTB	Built in			
Wireless Protocols	CRMX, UHF, Bluetooth, WIFI			
Wireless Range	CRMX/UHF up to 300 m / 330 yds, Bluetooth up to 3 m / 3.3 yds			
Housing Material	Polycarbonate, metal end caps			
IP Rating	IP65 (only with FP1-SP)			IP65 (only with SiliconeCap)
Ambient Operating Temperature	0 - 40 °C / 32 - 104 °F			
Weight	0.765 kg / 1.68 lb	1.35 kg / 3 lbs	2.9 kg / 6.39 lbs	1 kg / 2.2 lbs
Dimensions (L x Ø)	550 x Ø 43 mm 21.7 x Ø 1.7"	1035 x Ø 43 mm 40.7 x Ø 1.7"	2031 x Ø 43 mm 79.9 x Ø 1.7"	1035 Ø 43 x mm 40.7 x Ø 1.6"

*Typical values

ACCESSORIES



CrossPlate
Connects up to 4 tubes to one BabyPin (welded to backside)
AX1-CP



WingPlate
Hang tubes via one babyPin or connect several tubes together
AX1-WP



TubeHolder
Fix tubes via screws or BabyPin to walls and structures
AX1-H



TubeStand
Foldable tripod for a quick setup
AX1-STD



BabyPin 1/4"
Connects Holder/Wingplate to Manfrotto and Matthews clamps
AX-BBP-1/4



HeliosHandle
Use Helios as a handheld light (only suitable for Helios Tube)
FP2-HND



M5 Eyebolt
Eyebolt for hanging Titan, Helios and Hyperion Tubes (also as secondary mounting for all Tubes)
FP1-EBLT / AX1-EBLT (no rubber ring)

SOFTBAG TITAN / PIXEL TUBE

For up to 4 Titan Tubes / Pixel Tubes and all their accessories, power supplies, wingplates, cables and more
1085 x 310 x 175 mm
FP1-SB



SOFTBAG HELIOS TUBE

For up to 4 Helios Tubes and all their accessories, power supplies, wingplates, cables and more
590 x 300 x 132 mm
FP2-SB



TUBE-KIT & CASES

Cases for charging and safe transportation of your tubes and accessories.

HELIOS TUBE KIT

765 x 503 x 260 mm
29 kg/64 lbs (full weight)
FP2-BTB-SET

8x Helios Tube BTB

16x BabyPin1/4" 16x TubeHolder 1x PowerBox
1x AC Cable 16x Eyebolt 8x TubeStand



TITAN TUBE KIT

1147 x 443 x 157 mm
35 kg / 77 lb (full weight)
FP1-BTB-SET

8x Titan Tube BTB

16x BabyPin1/4" 16x TubeHolder 1x PowerBox
1x AC Cable 16x Eyebolt 8x TubeStand



4x Hyperion Tube BTB

8x BabyPin1/4" 8x Eyebolt 8x TubeHolder
4x Wingplate 1x Power Supply Unit Adapter 4x Power Supply Unit
1x DataLink



HYPERION TUBE KIT

2262 x 394 x 149 mm
29 kg / 64 lb (full weight)
FP3-BTB-SET



PIXEL TUBE KIT

1147 x 443 x 157 mm
33 kg / 72.8 lb (full weight)
AX1-BTB-SET

8x Pixel Tube BTB

16x BabyPin1/4" 16x TubeHolder 1x AX1 ChargingBox
16x Eyebolt 8x TubeStand



All Tube Cases come with:

WHEELS
not Hyperion Set



HANDLE



IN CASE CHARGING



RUGGED CASE



PIXELBRICK PB15

Say hello to our next-generation multi-purpose light. In addition to being a battery-powered uplight and PAR with 5 different beam options, multiple PixelBricks can be connected to form clusters and shapes. With about 10cm edge length and 1kg weight, it is small and lightweight while still featuring a powerful output of high-quality light. The PixelBrick can be used for many stage, film and TV applications.



Max. 20h



App



Wireless DMX

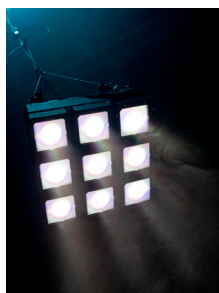


IP65

15W RGBMA



BUILD CUSTOM SHAPES
with our creative accessories



Use filters & domes for additional beams

FEATURES

AIRLINE TRACKS
on 4 sides for mounting and building shapes and clusters

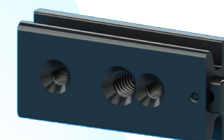
SOCKETS
for power management and wired DMX



BACKSIDE DISPLAY
with Titan Tube layout for standalone operation and DMX preparation

MULTI FUNCTIONAL BRACKET
removable, with Airline Track, 1/2" hole and 3/8"-16 UNC thread for hanging and mounting

ACCESSORIES



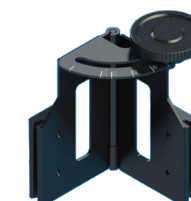
BrickMount

Slide into the PixelBrick's side to connect mounting tools through 1/4"-20 and M5 threads.
PB15-BMO



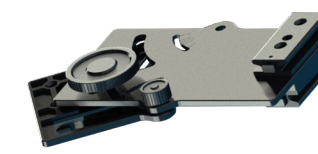
BrickConnect

Connect 2 PixelBricks to each other's side.
PB15-BCN



BrickHinge

Connect 2 PixelBricks, angle them to spread their beam and to create shapes.
PB15-BHI



BrickTilt

Connect 2 PixelBricks, tilt them to spread their beam and to create shapes.
PB15-BTLT



BrickBase

BasePlate to support PixelBrick shapes, can be placed on floor or attached to truss tops.
PB15-BBSE



BrickDome

Create an evenly illuminated pixel dome or remove the 120° filter for a wide-angle soft light.
PB15-BDM



FloodFilter

Insert filter into light to get a 32° beam.
PB15-FF



BeamSoftener

Insert filter to mix colors better and get a softer 17° beam.
PB15-BSO



StealthCover

Gives a black surface so that it can blend into dark environments
PB15-SC

KITS



ACCESSORY KIT

520 x 400 x 140 mm
13.3 kg / 29.3 lbs (full weight)
PB15-ACCSE-SET

Contains

- 10x BrickMount (PB15-BMO)
- 4x TrackPin (AX-TP)
- 8x BrickDome (PB15-BDM)
- 8x BrickHinge (PB15-BHI)
- 8x BrickTilt (PB15-BTLT)



8x Eyebolt (FP1-EBLT)

2x 5m Power/Data Combination cable (PWB-CAB-5)

6x 0.2mm Power/Data Combination cable (PWB-CAB-0.2)



PIXELBRICK KIT

541.5 x 400 x 205.5 mm
21.3 x 17.44 x 8.1 inches
16.3 kg / 36 lbs (full weight)
PB15-SET

Contains

- 8x PB15 PixelBrick (PB15)
- 1x PowerBox (PWB-2-86)
- 1x PowerConTrue1
- 8x BrickConnect (PB15-BCN)
- 8x FloodFilter, 8x BeamSoftener (PB15-FF, PB15-BSO)

SPECIFICATIONS

Order Code	PB15
LED Engine (colors)	Titan LED Engine (RGBMintAmber)
Total LED Power	15 W
LED Power Draw	12 W
Luminous Flux – 2700K, 3200K, 5500K*	405, 475, 395 Lumens
Light Output @2m – 2700K, 3200K, 5500K	6 178, 7 144, 5 985 Lux
CRI(Ra)/TLCI 3200-6500K*	≥96
Beam Angle	13°
Strobe	0 - 25 Hertz
Battery Runtime	up to 20 hours
Battery Lifetime	70 % after 300 cycles
Charging Time (nominal)	5 hours
DC Input	24 VDC - 0.8 A

*Typical values

Wired DMX	Yes via PWB-2-86 (FP1-PWB / FP3-DTL)
CRM Receiver	Built in
BluetoothBridge BTB	Built in
Wireless Protocols	CRM, UHF, Bluetooth, WiFi
Wireless Range	CRM/UHF up to 300 m / 330 yds Bluetooth up to 3 m / 3.3 yds
Housing Material	Aluminium
IP Rating (unwired)	IP65 (only with PB15-PLG)
Ambient Operating Temperature	0 - 40 °C / 32 - 104 °F
Weight	1.12 kg / 2.47 lbs
Dimensions (L x W x D)	91 mm x 91 mm x 94 mm / 3.6" x 3.6" x 3.7"

AX9 PowerPAR

AX5's Big Brother – Twice as bright!

The AX9 utilizes the AX5's successful 3-in-1 concept which allows it to be used as wireless light and elegant uplight as well as a wired PAR light for longer or bigger installations. This makes it an extremely cost-efficient light and keeps your investment to a minimum. The AX9 packs extreme brightness in a compact and light housing while still giving you industry-leading colors and white tones thanks to its Titan LED Engine.

105W RGBMintAmber



Max. 20h



App



Wireless DMX



IP65



Max. 20h



App



Wireless DMX



IP65

AX5 TriplePAR

3-in-1 The Perfect PAR

Optimized for a fast return on investment, AX5 replaces your wireless and wired PARs as well as battery uplights.

45W RGBAW

COMPARISON

	AX9 PowerPAR	AX5 TriplePAR	
LED Engine	Titan LED Engine (RGBMintAmber)	RGBAW	LED Engine
Total LED Power	105 W	45 W	Total LED Power
Weight	5.7 kg / 12.5 lbs	3.4 kg / 7.5 lbs	Weight
Bracket	Removable with Airline Track, 3/8" thread, 1/2" hole	Removable with 3/8" thread	Bracket
App Control	via AsteraBox or Bluetooth Bridge	via AsteraBox or Bluetooth Bridge (only for AX5-BTB)	App Control
Control Panel	OLED screen with 5 buttons + dedicated buttons for color & brightness	LCD screen with 5 buttons	Control Panel



Stand

Optimized bracket with Airline Track, 3/8" thread, 1/2" hole



Airline Track & Thread

Airline Track, 3/8" thread and 1/2 hole for several mounting tools.



Removable Bracket

Turn your AX9 into an uplight in seconds



7x15 RGBMintAmber LED

And high CRI due to individual factory calibration



3x15 RGBAW LED

And high CRI due to individual factory calibration



Removable Bracket

Turn your AX5 into an uplight in seconds



Stand

Foldable and with thread for hanging

3-IN-1

Wireless PAR



Elegant Uplight



Adjustable kickstand for flexible wall uplighting

Wired PAR



AX9 ACCESSORIES



Flex Cover White
Wrap around the AX9 to turn it into an elegant uplight.
AX9-FLXCVR-WT



Flex Cover Mirror
Wrap around the AX9 to turn it into an elegant uplight.
AX9-FLXCVR-MIR



FloodFilter 32°
Insert filter into light to get a 32° beam.
AX9-FF



WallwashFilter 17°x46°
Insert filter into light to get an elliptical 17° x 46° beam.
AX9-WWF



RotatableFilter 17°x46°
Filter with elliptical 17° x 46° beam that can be turned around while inserted into the light.
AX9-ROTAD



EggCrate
Cuts off spill light around the beam and avoids glare.
AX9-EGC

3-IN-1

Wireless PAR



Elegant Uplight



Adjustable kickstand for flexible wall uplighting

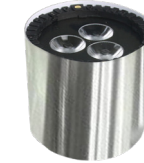
Wired PAR



AX5 ACCESSORIES



Flex Cover White
Wrap around the AX5 to turn it into an elegant uplight.
AX5-FLXCVR-WT



Flex Cover Mirror
Wrap around the AX5 to turn it into an elegant uplight.
AX5-FLXCVR-MIR



Volcano Cover White
Slide the volcano cover over an AX5 to give it a clean and classy look.
AX5-VULCVR-WT



FloodFilter 32°
Insert filter into light to get a 32° beam.
AX5-FF



WallwashFilter 17°x46°
Insert filter into light to get an elliptical 17° x 46° beam.
AX5-WWF



RotatableFilter 17°x46°
Filter with elliptical 17° x 46° beam that can be turned around while inserted into the light.
AX5-ROTAD



Diffuser Dome
Use as softlight projector or insert the included 120° filter to create a stunning light ball.
AX5-DDM



Snoot
Built-in beam shaping tool to narrow and define the beam. Integrated honeycomb to avoid glare.
AX5-SN



CHARGING

AX9 CHARGING CASE

Attention: Cases are different depending on your country - please ask your local dealer for more details.

DEDICATED SPACE FOR 8x (max) AX9

8x TrackPin

8x Bracket

8x Super Clamp

16x Filter

1x Charging Plate



CHARGING PLATE (FOR 8 AX9)

715 x 558 x 157 mm / 28.1 x 22 x 6.2 inch
(only on request)
AX9-CHRPLT-8

FEATURES

Keypad with dedicated brightness & color buttons

Charging contacts for flight case charging

4x Rubber Feet

4x M6 thread

Safety hook

Disc break

Bracket with Airline Track, 3/8" thread, 1/2" hole

Foldable feet



AX9 SPECIFICATIONS

Order Code	AX9
LED Engine (colors)	Titan LED Engine (RGBMintAmber)
Total LED Power	105 W
LED Power Draw	70 W
Luminous Flux – 2700K, 3200K, 5500K*	2 844 / 3 214 / 3 047 Lumens
Emittance @2m – 2700K, 3200K, 5500K*	41 755 / 47 078 / 44 355 Lux
CRI(Ra)/TLCI 3200-6500K*	≥96
Beam Angle	13°
Strobe	0 - 25 Hertz
Battery Runtime	up to 20 hours
Battery Lifetime	70 % after 300 cycles
Charging Time (nominal)	5 hours

*Typical values

AC Input	100-240 VAC, 50/60 Hz, 2.3 A/115 VAC, 1.1 A/230 VAC, 110 W
Wired DMX	Yes (5-pin XLR)
CRMX Receiver	Built in
BluetoothBridge BTB	Built in
Wireless Protocols	CRMX, UHF, Bluetooth, WIFI
Wireless Range	CRMX/UHF up to 300 m / 330 yds Bluetooth up to 3 m / 3.3 yds
Housing Material	Aluminium
IP Rating	IP65
Ambient Operating Temperature	0 - 40 °C / 32 - 104 °F
Weight	5.66 kg / 12.5 lbs
Dimensions (L x W x D)	175 mm x 222 mm x 256 mm / 6.9" x 8.7" x 10.1"

CHARGING

AX5 CHARGING CASE

740 x 580 x 540 mm
45 kg / 99 lbs (full weight)
AX5-CHRCSE



DEDICATED SPACE FOR 8x (max) AX5

8x AX5 Bolt

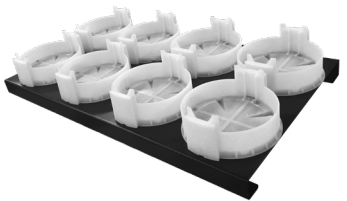
8x Bracket

8x Super Clamp

16x Filter

1x Charging Plate

Exact case design varies from country to country



CHARGING PLATE (FOR 8 AX5)

700 x 540 x 250 mm
8 kg / 17.6 lbs (empty weight)
(only on request)
AX5-CHRPLT-8

FEATURES

Keypad with 5 Buttons

Charging contacts for flight case charging

4x Rubber Feet

4x M6 thread

Safety hook

Disc break

3/8" thread (can be removed and truned into a 1/2" hole)

Foldable feet



AX5 SPECIFICATIONS

Order Code	AX5-BTB
LED Engine (colors)	RGBAW (RGBAW)
Total LED Power	45 W
Light Output 3200 K @ 2m	4800 Lux
CRI (Ra)/ TLCI 3200- 6500 K*	≤92
Beam Angle	13°
Strobe	0 - 25 Hertz
Battery Runtime	up to 20 hours
Battery Lifetime	70 % after 300 cycles
Charging Time (nominal)	5 hours
AC Input	90-264 VAC, 47/63 Hertz, 1.2 A / 115 VAC, 1.0 A / 230 VAC

Wired DMX	Yes (via 5-pin XLR)
CRMX Receiver	Built in
BluetoothBridge BTB	Built in
Wireless Protocols	CRMX, UHF, Bluetooth, WIFI
Wireless Range	CRMX/UHF up to 300 m / 330 yds Bluetooth up to 3 m / 3.3 yds
Housing Material	Aluminium
IP Rating	IP65
Ambient Operating Temperature	0 - 40 °C / 32 - 104 °F
Weight	3.4 kg / 7.5 lbs
Dimensions with bracket (L x W x D)	148.1 mm x 193.6 mm x 213.5 mm / 5.83" x 7.62" x 8.40"

*Typical values

AX3 LightDrop

The AX3 is a battery operated, easy to use IP65 RGBW puck aimed at stage lighting and corporate events. It can be used as uplight as well as hanging or standing spotlight and inside translucent objects, truss, etc. It is extremely compact and yet offers a high brightness paired with long battery runtime and range.



Max. 20h



App



Wireless DMX



IP65

15W RGBW



Small yet powerful
only 95mm diameter and 59mm height (inches 3.7x2.3)



Removable Bracket

3x M4 thread for hanging and safety

Adjustable kickstand for flexible wall uplighting

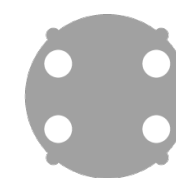
3/8" thread for hanging and mounting on truss

Backside magnet for easy mounting



DiffuserDome

Create a wide-angle soft light or add a 120° filter to create an evenly illuminated pixel dome.
AX3-DDM



WallwashFilter (17°x46°)

Insert filter into light to get an elliptical 17° x 46° beam.
AX3-WWDSK



included

FloodFilter (30°)

Insert filter into light to get a 30° beam.
AX3-DDSK-30



included

DiffuserFilter (120°)

Insert filter into light to get a 120° beam.
AX3-DDSK-120

KIT



AX3 KIT

520 x 400 x 140 mm
20.5 x 15.7 x 5.5 inches
12,4 kg/27.3 lb (full weight)
AX3-BTB-SET

8x AX3
including Brackets

8x 30° Filter

8x 120° Filter

32x Rubber Feet

24x Hook

8x Socket Cover

1x Power Cord

SPECIFICATIONS

Order Code	AX3-BTB
LED Engine (colors)	RGBW (RGBW)
Total LED Power	15 W
Luminous Flux 3200K	430 Lumens
Light Output 3200 K @ 2m	1300 Lux
CRI (Ra)/ TLCI 3200- 6500 K*	≤88
Beam Angle	13°
Strobe	0 - 25 Hertz
Battery Runtime	up to 20 hours
Battery Lifetime	70 % after 300 cycles
Charging Time (nominal)	7 hours
DC Input	5 VDC - 2.5 A

Wired DMX	No
CRM Receiver	Built in
BluetoothBridge BTB	Built in
Wireless Protocols	CRM, UHF, Bluetooth, WIFI
Wireless Range	CRM/UHF up to 300 m / 330 yds Bluetooth up to 3 m / 3.3 yds
Housing Material	Aluminium & Polycarbonate
IP Rating	IP65 (only with Waterproof Protection Cover (AX3-SP))
Ambient Operating Temperature	0 - 40 °C / 32 - 104 °F
Weight	0.68 kg / 1.4 lb
Dimensions with bracket (L x W x D)	120 mm x 59 mm x 114 mm 7.4" X 2.3" X 4.4"

*Typical values

AX2 PIXEL BAR

Astera's Wireless PixelBar is a linear wash fixture. Each of its LEDs can be individually addressed and offers ultra-high color rendering, digital color calibration and a native 21° beam. Thanks to its smart stands, hanging bracket, connectable endcaps and the integrated Airline Track it can be quickly assembled in numerous ways and is suitable for a wide variety of applications such as concert/touring, corporate events, TV etc.

Available in 2 sizes 50cm with 8x10W and 100cm with 16x10W (20" and 40")



160W RGBMintAmber

80W RGBMintAmber

Removable feet

Multi-functional feet with quick-release clamp

BarConnect+

for connecting several AX2.
With IR-Module for easy communication



Airline Track

Airline Track at back and bottom to attach mounting tools

Barndoors

Control the shape of the light



Max. 20h

App

Wireless DMX

IP65

ACCESSORIES



TrackPin

5/8" Babypin, connects to all Astera products with airline track.

AX-TP



FlyBar

Sturdy rigging accessory for hanging a string of connected AX2s from a single point.

AX2-FB

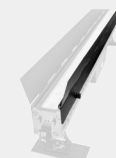


2pc included

TrackHanger

Solid accessory for rigging and safety wires. Attaches to Astera fixtures with Airline track.

AX-TH



Barndoor for AX2

Acts as glare shield and controls the AX2 beam.

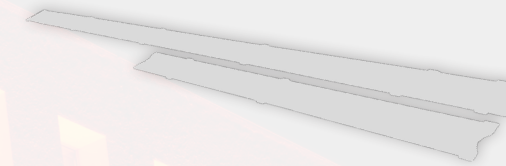
AX2-100-BD / AX2-50-BD



JumpCable for AX2

Hybrid cable that combines power in/out and data in/out into 1 cable.

AX-JC



Filter 30°

Insert filter into light to adjust beam.

AX2-100-F30
AX2-50-F30

Filter 60°

AX2-100-F60
AX2-50-F60

Filter 120°

AX2-100-F120
AX2-50-F120

Stealth Cover

Gives the AX2 a black surface so that it can blend into dark environments

AX2-100-SC / AX2-50-SC

AX2 CHARGING CASE

1190 x 588 x 468 mm
46.9 x 22.8 x 21.3 inch
AX2-50-CHRCSE
AX2-100-CHRCSE

This sturdy flight case can charge 4 AX2-50 or 4 AX2-100 through the integrated AC distribution cable from one AC socket. Dedicated spaces for barndoors, brackets and additional side compartment for other accessories.

Can hold

4x PixelBar 50 or 100 (not included)
(AX2-50 / AX2-100)

8x TrackPin (not included)
(AX-TP)

8x Barndoor (not included)
(AX2-50-BD / AX2-100-BD)

4x PowerCon True1 cable (included with AX2)

8x Feet (included with AX2)
(AX-FT)

4x FlyBar (not included)
(AX-FB)

4x JumpCable (not included)
(AX-JC)

1x AC Distribution Cable (included)
(AX2-CHRCSE-ACDIS)



SPECIFICATIONS

Order Code	AX2-100 / AX2-50	Battery Runtime	70 % after 300 cycles
LED Engine (colors)	Titan LED Engine (RGBMintAmber)	Charging Time (nominal)	5 hours
Total LED Power	160 W / 80 W	AC Input	96-264 VAC, 50/60 Hertz, 2 A, 104 W 96-264 VAC, 50/60 Hertz, 2 A, 49 W
LED Power Draw	80 W / 40 W	Wired DMX	Yes (via 5-pin XLR)
Luminous Flux – 2700K / 3200K / 5500K*	3 600 lm / 4 460 lm / 4 530 lm 1 800 lm / 2 230 lm / 2 265 lm	CRMX Receiver	Built in
Light Output @ 1 m – 2700K / 3200K / 5500K*	17 995 Lux / 22 125 Lux / 22 025 Lux 8 995 Lux / 11 060 Lux / 11 010 Lux	Wireless Protocols	CRMX, UHF
CRI(Ra) / TLCI 3200-6500K*	≥96	Wireless Range	CRMX/UHF up to 300 m / 330 yds
Beam Angle	21°	Housing Material	Aluminium
Strobe	0 - 25 Hertz	IP Rating	IP65
Pixel	16 / 8	Ambient Operating Temperature	0 - 40 °C / 32 - 104 °F
Battery Runtime	up to 20 hours	Weight	7.4 kg / 16.3 lbs / 4.5 kg / 9.9 lbs
		Dimensions with hook (L x W x D)	1020 x 165 x 65 mm / 40.1 x 6.5 x 2.6" 520 x 165 x 65 mm / 20.5 x 6.5 x 2.6"

*Typical values

NYX BULB

The color-tunable LED bulb for professional film, stage and event productions. Not bigger than a normal LED bulb, it contains a CRMX receiver as well as RF and Bluetooth modules for the AsteraApp. It can be powered via E26/E27 thread or with a standard power bank and thanks to its Titan LED engine it displays precise colors and white tones with ultra-high CRI and TLCI.



App



Wireless DMX



IP44



Dual Power Input

Power through E27 / E26 / B22 AC thread or external (standard power bank or NYX PowerStation)



PowerStation for NYX Bulb

Battery pack and remote display to power and program NYX Bulb. Attach NXY Bulb via lamp socket and connect mounting accessories to the integrated Airline Tracks.



ACCESSORIES

included

USB DC Cable

Short cable to power your NYX Bulb from a 5-18VDC power source, e.g. a standard power bank.
FP5-USBC



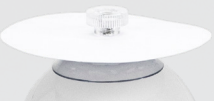
TrackPin

5/8" Babypin, connects to all Astera products with airline track.
AX-TP



PowerStation Hanger

Ring with attaches to PowerStation to suspend or secure it.
FP5-PSH



CupBouncer

Attach to NYX Bulb via suction cup and control the light by bouncing it back.
FP5-CPB



D-TAB SplitCable

Power up to 8 NYX Bulbs from one V-mount battery with D-tab socket.
FP5-DTSC



Extension Cable for NYX Bulb

Add 1.5m of cable length to the PowerStation if you need to place a NYX Bulb further away.
FP5-EXC



LampSocket

Dummy socket which attaches a NYX Bulb to a PowerStation without powering it.
FP5-E27S

included with PowerStation

NYX BULB KIT

414 x 334 x 130 mm
16.3 x 13.1 x 5.1 inches
5.3 kg/11.7 lbs (full weight)
FP5-SET

8x NYX Bulb



POWERSTATION KIT

520 x 400 x 140 mm
20.5 x 15.7 x 5.5 inches
8.5 kg/18.7 lbs (full weight)
FP5-PS-SET

8x PowerStation



KIT



Connect the 8 PowerStations with the 8 NYX Bulbs for easy programming.

SPECIFICATIONS

Order Code	FP5-E27 / FP5-E26 / FP5-B22	Wired DMX	No
LED Engine (colors)	Titan LED Engine (RGBMintAmber)	CRMX Receiver	Built in
Total LED Power / LED Power Draw	14 W / 10 W	BluetoothBridge BTB	Built in
Luminous Flux - 3200K / 4000K / 5500K	618 / 750 / 683 Lumens	Wireless Protocols	CRMX, UHF, Bluetooth
CRI(RA)/TLCI 3200-6500k*	≥96	Ambient Operating Temperature	0 - 40 °C / 32 - 104 °F
Battery	only external	Dimensions (Ø x L)	Ø 70 x 130 mm / Ø 2.76 x 5.12 inches
AC Input	FP5-E27 / -BC: 100-240 VAC FP5-E26: 100-120 VAC	Weight	240 g / 0.53 lb
DC Input	5-18 VDC, 2.1 A	IP Rating	IP44: connected via AC + FP5-SP in DC socket; IP20: connected via DC socket

*Typical values

POWER, CHARGING, CONNECTIVITY

TITAN POWERBOX

TITAN POWERBOX FP1-PWB

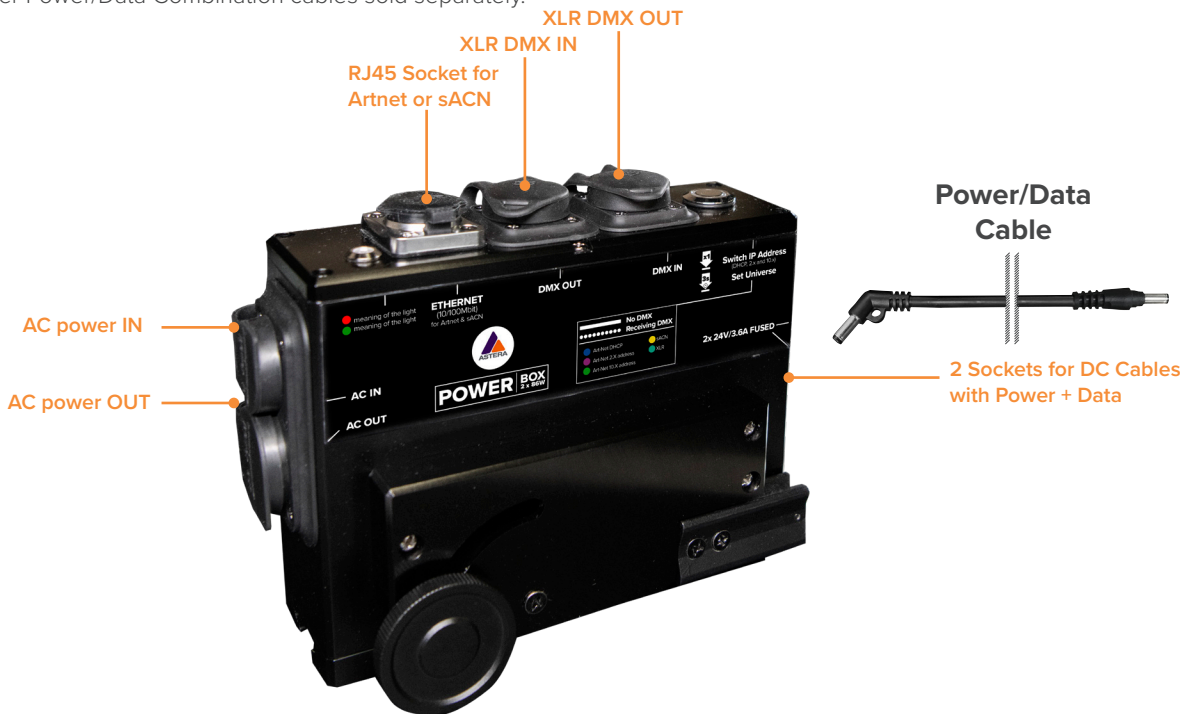
Power supply for charging 8 Titan Tubes or Helios Tubes at the same time. Also works as a converter for DMX, Art-NET and sACN. Including 1 PowerCon True1 AC cable and 8 short DC charging cables.



POWERBOX 2X86

POWERBOX 2X86 PWB-2-86

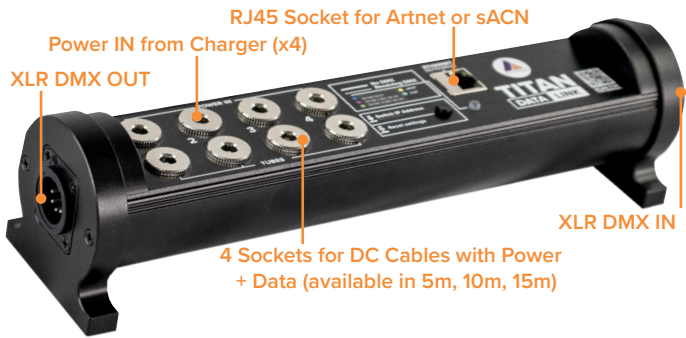
Charge or install 8 PixelBricks. Also allows wired data transfer from DMX, Artnet and sACN sources. Comes with PowerCon True1 AC cable and 8 short DC charging cables. Longer Power/Data Combination cables sold separately.



DATALINK

DATALINK FP3-DTL

Required device to send wired DMX to Hyperion Tube. Also useful for Titan Tube and Helios Tube if no Titan PowerBox is available or to work with multiple universes on one PowerBox.



COMPATIBILITY TABLE

	Helios Tube	Titan Tube	Hyperion Tube	AX1	PixelBrick	HydraPanel	PlutoFresnel
Titan PowerBox	x	x			x	x	
PowerBox 2x86	x	x	x		x	x	x
Datalink	x	x	x		x	x	x
AX1 ChargingBox				x			
Power Supply for Helios/Titan Tube	x	x			x	x	
Power Supply for Hyperion Tube	x	x	x		x	x	x
Power Supply for AX1				x			
Extension Cable for AX1				x			
Extension Cable for Helios, Titan, Hyperion	x	x	x		x	x	x
Titan Power/Data Combination Cable	x	x	x				x
Power/Data Combination Cable					x	x	

ACCESSORIES

AX1 Pixel Tube Power Supply
AC to DC power converter, charges 1 AX1 PixelTube or wires it for a longer installation.
AX1-CHR

Helios/Titan Tube Power Supply
AC to DC power converter, charges 1 Titan or Helios Tube or wires it for a longer installation.
FP1-CHR

Hyperion Tube Power Supply
AC to DC power converter, charges 1 Hyperion Tube or wires it for a longer installation.
FP3-CHR

AX1 Extension Cable
Extend the PSU cable length by 5m.
AX1-EXC

Helios, Titan, Hyperion Tube Extension Cable
Extend the PSU cable length by 5m.
FP1-EXC

Titan Power/Data Combination Cable
Transfer Power + Data through a single cable; 5, 10 or 15m length.
FP1-PWB-CAB-5/-10/-15

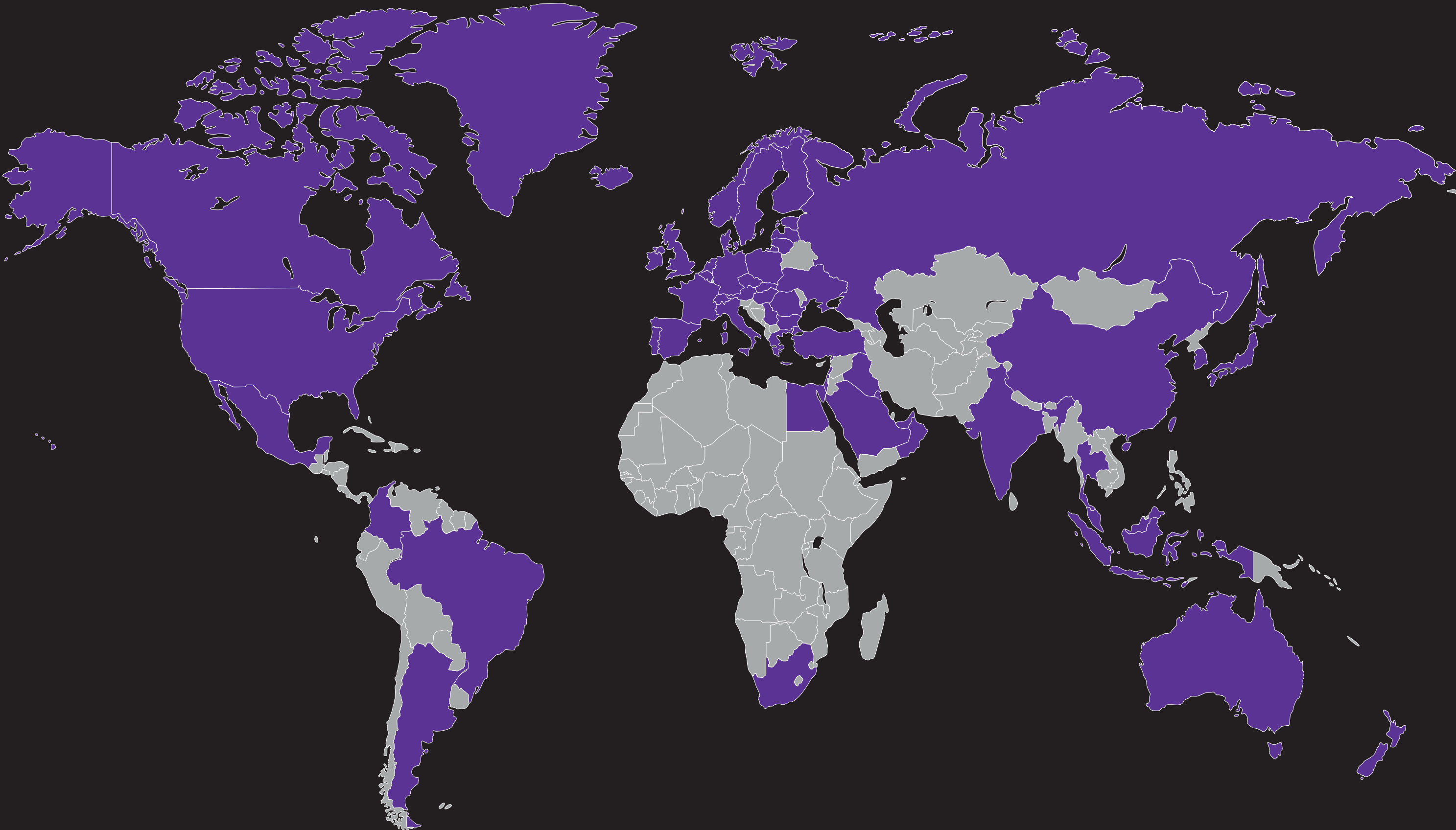
Power/Data Combination Cable
Transfer Power + Data through a single cable; 0.2, 1.5, 5, 10 or 15m length.
PWB-CAB-0.2/-1.5/-5/-10/-15

ASTERA WORLDWIDE

BUY, RENT & SERVICE

You can buy and rent Astera lights in more than 50 countries. In addition, we have established certified service centers in most of these countries to ensure the best service and support possible no matter in which part of the world you are.

FIND YOUR DEALER: WWW.ASTERA-LED.COM/DEALER
 FIND YOUR SERVICE-CENTER: WWW.ASTERA-LED.COM/SUPPORT





Contact

Astera LED Technology GmbH
Schatzbogen 60
81829 Munich
Germany

E-mail: info@astera-led.com

Website: www.astera-led.com